

AROCS 4751 10X4/6



Zoomlion Heavy Industry Science & Technology Co. Ltd.

Mercedes-Benz
Trucks you can trust



Orderdata (Order 1421701282)

Code	Description	Code	Description
A1D	Front axle 8.0 t	L1W	LED turn signals in light signature
A1Y	Front axle, straight version	L2H	Side marker lamps, flashing
A2G	Rear axle, crown wheel 300, planetary, 13.4 t	L9A	Pre-installation for rotating beacons
A6C	Axle ratio i = 4.833	M0C	Bottom shell to prevent swirling-up of dust
B1B	Electronic braking system with ABS and ASR	M0Q	Noise regulation acc. to UN-R 51.03, phase 2
B1F	Heating, electronic air-processing unit	M3D	Eng. OM471, inline 6, 12.8 l, 375kW (510hp), 2500 Nm
B1H	Electr. compressed air supply and control, centre	M4X	Engine version Euro VI, E
B2A	Disc brakes on front and rear axle	M5D	3. Engine generation OM471
B2D	Cover plate for brake discs	M5V	High Performance Engine Brake
B2X	Parking brake, electronic	M6L	Air compressor, 2-cylinder
B3H	Water-type secondary retarder	M7I	Insect screen in front of cooling system
B4A	Condensation monitoring, for compressed air sys.	M8A	Air intake from front
B4M	Air reservoir, steel	M8Y	Fuel pre-filter, chassis-mounted, additional
CLW	Steering oil cooling	M9V	Deletion, guard plate, bumper
C2T	Wheelbase 4850 mm	M9Y	Deletion, water pump, governed
C4K	Frame overhang 2500 mm	N2E	PTO MB 131-2c, pump
C5P	Bolted frame	N4Z	Live power take-off, clutch-dependent, MB 1.65
C6H	Steering, Servotwin, 4-axle and 9t FA, air	N6L	Transmission lock, live power take-off
C6J	Power steering pump, uncontrolled	N6Z	Transmission oil cooling
C6Q	Stabiliser, front axle	N9U	PTO flange with cross serrations, D=120 mm
C6V	Stabiliser, 1st rear axle	OWY	Interior measures upgrade
C6W	Stabiliser, reinforced, 2nd rear axle	O0C	Coolant service interval, medium for SWR
C7F	Front underride guard (ECE), aluminium	O0T	TruckLive
C7K	Battery carrier, batteries stacked	O1B	Fuel pre-filter, 2nd position
C8B	Rear wing, 2550 mm vehicle width	O1E	Coolant pressure regulation
C8H	Wing, 3-piece, with EC splash guard	O1N	Detachable parts for offline cab
C8I	Splash guard (EC), front	O1T	Interior colour greige/anthracite
C9S	Deletion mounting parts, on frame	O1Z	Steering, indirect
C9Y	Deletion, rear underride guard (ECE)	O2F	PTO, NMV or engine, rear
D0L	Smokers pack	O2M	GU vehicle without registration restriction
D0S	Compressed-air connection, in cab	O2N	Starter Melco 95P65
D1C	Driver's suspension seat, comfort	O2X	Optimised cab separation point, supply
D1N	Fold-up co-driver's seat	O3K	Active Safety
D2Y	Seat belt monitor	O6U	Ctrl. code, ident. plate Europ. type approv. stage2
D5S	Seat cover, prem. flat-weave fabric, driver's seat	P0Q	Cover, for wheel arch and engine
D5T	Seat cover, prem. flat-weave fabr., passenger	Q1X seat	Front spring. 2 x 8,0 t, 3-leaf

Orderdata (Order 1421701282)

D5Y	Rubber mats, driver's and co-driver's side	Q3C	Rear spring, 2 x 15.0 t
D6F	Air conditioning system	Q8N	End crossmember, 300 mm indented
D6I	Residual engine heat utilisation	Q9Z	Deletion, trailer coupling
D6Z	Construction-site filter	R0L	Tyres, customer request, FA
D7G	Stowage compartment lid, driver and co-driver side	R0M	Tyres, customer request, FA/lead. axle/trail. Axle side
D7Q	Stowage facility, high, on engine tunnel	R0Z	Wheel-nut cap
D8A	Roof hatch/vent, roof	R1Q	15-degree tapered rims, 9.00 x 22.5
E0D	Battery sensor, Hella	S1H	Lane Keeping Assist
E0F	Batteries from company Exide	S1L	Attention Assist
E1C	Batteries 2 x 12 V/220 Ah, low-maintenance	S1O	Traffic Sign Assist
E1N	Alternator 28 V/100 A	S1Y	Tyre pressure monitor
E2J	Automatic cutouts	S2D	Active Brake Assist 6
E3E	Additional socket, 12 V/15 A, co-driver footwell	S2H	Active Sideguard Assist 2
E3L	Socket, 24 V/15 A, co-driver footwell	S2L	Frontguard Assist
E3W	PSM, 2nd generation	S2Q	Sensor position, side radar, widened
E4C	Additional functions, for body manufacturer	S4A	Pre-installation for alcohol test on start-up lock
E5A	No. 1 switch, for non-MB body electrics	S5A	Speed limiter, 90 km/h (56 mph), ECE
E5B	No. 2 switch, for non-MB body electrics	S5Z	Cruise control
E5C	No. 3 switch, for non-MB body electrics	S8A	First aid kit
E5H	Switch for night-time driving light	S8C	Hazard warning triangle
E6Y	Reverse warning, comb. with hazard warning lights	S8D	Warning lamp
F0D	M-cab, low roof, 2.30 m, tunnel 170 mm	S8E	Reflective safety jacket
F0F	Side module, N3 vehicle	S8F	Hazard warning triangle, additional
F0Y	Mirror cover, construction vehicle	S8H	Fire extinguisher, 6 kg
F1Q	M-cab	U1W	AdBlue lines, water-heated
F2B	Floor variant, tunnel 170 mm	U2G	Exhaust box
F2G	Cab width 2.30 m	U2M	Control code, ASAM
F2N	Cab, 600 mm attachment height	U2T	Control code, exhaust box, rear outlet
F2Y	ClassicSpace Low Roof	U2V	Control code, catalytic converter kit 2
F3A	Cab mountings, standard, steel-sprung	U3D	Control code, CAN star points, classic
F3W	Cab tilting mechanism, mechanical-hydraulic	U3F	Control code, global AdBlue sensor (GMS DEF)
F4I	Cab rear wall, with window	U3S	3rd-generation electronics architecture
F4X	Stowage compartment exterior flap, left	V0Q	Vehicle version in acc. w. GSR, phase B
F5L	Sun visor, exterior, transparent	V0S	Vehicle class N3
F5Y	A-pillar trim	V0W	Breakover angle, minimum 25 degrees
F6D	Windscreen, tinted, with filter band	V0X	Ground clearance under front axle, minimum 250 mm
F6I	Front mirror, heated	V0Y	Ground clearance under rear axle, minimum 250 mm
F6Q	Air horn	V0Z	Ground clearance between axles, minimum 300 mm
F7B	Bumper, with steel corners	V1B	Arocs
F7D	Bumper centre section w. towing eyes, coupling	V1Z jaw	Grounder
F7Y	Cab entrance, left/right, movable	V2J	Arocs model generation 5
F8B	2 remote control keys	V7M	Body type: concrete pump
F8E	Locking system, with central locking	V8A	Chassis number FIN

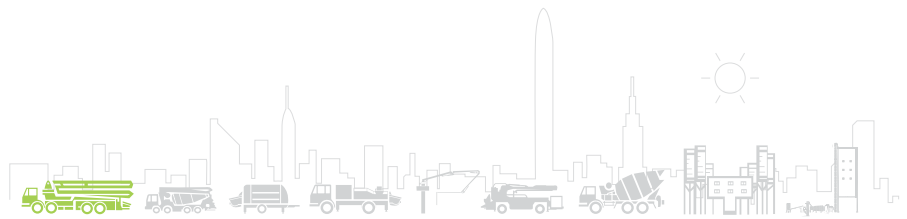
Orderdata (Order 1421701282)

F8F	Extended central locking	V9G	Technical changes model year October
F8H	2 remote control keys, additional	W8F	Weight variant 42.0 t (8.0/8.0/13.0/13.0)
F8V	Light sensor	X2A	Model identification, acc. to weight variant
F8W	Rain sensor	X2E	Model plate, EU
G0C	Powertrain, 44 t to 120 t	X2T	Maintenance Documentation
G0R	Transmission support arms, optimised for removal	X2Y	Registration certificate, Part II, prepared
G0T	Predictive Powertrain Control	X3O	Mercedes-Benz OnRoadService
G0W	Drive program offroad	X3Z	Powertrain warranty as per T and Cs 3yrs/250,000km
G2D	Transmission G 280-16/11.7-0.69	X4H	Instrument/labels/documentation, German
G5B	Double-disc clutch	X4S	ATS warranty according to GTC, 4th year/340,000 km
G5G	Mercedes PowerShift 3	Y1B	Control of colours, high-runner colours
G5L	PowerShift Advanced	Y1H	Assignment of cab paintwork, NFL North
G5Y	Tachograph calibration, digital, ex factory	Y4H	Holder for wheel chock
I2G	Tyres tubeless, 315/80 R 22.5, fr./lead./trl. axle	Y4J	2 wheel chocks
I2H	Tyres, tubeless, size 315/80 R 22.5, rear axle	Y4X	Tyre inflating hose, 25 m
I4L	Wheel arrangement 8x4/4	Y4Z	Compressed-air gun, with hose
I5J	41.0-tonner	Z1H	EBS, Wabco
I6A	Rigid chassis	Z1X	EAPU equipment, item 1
I6I	Vehicle production plant Wörth	Z3A	Switch module 1, type A
I6K	Heavy-duty model series, new generation from 18 t	Z3D	Switch module 2, type B
I6M	Heavy-duty vehicles from 18 t, off-road	Z3F	Switch module 7
I6W	Leaf suspension, rear axle	Z3H	Side marker lights, 1st pair
J0U	Remote update of driving assistance map	Z3J	Side marker lights, 3rd pair
J1M	Dig. tachograph, 2nd gen., version 2, ADR	Z3K	Side marker lights, 4th pair
J1S	Tachograph manufacturer VDO	Z3S	Front underride guard location 700 mm
J2K	Speaker, 2-way system	Z4B	Domestic (Germany)
J6C	Multimedia Cockpit, interactive	Z4M	Fan ratio, 1:1.0, fan output increased
J6W	Reversing camera, towing vehicle end	Z4P	Tank cross-section, wide
J7A	Truck Data Center 8	Z4Q	Tank cross-section, low
J7C	Card Reader for Truck Data Center	Z5E	OM 471
J7V	Driving assistance map, Europe region	Z5G	Fan position, on crankshaft
J8C	Pre-fitted Card Reader for Truck Data Center	Z5M	PTO, single
J8S	Preinst. & display for up to 2 additional cameras	Z5P	Clutch supplier F&S
J8U	Pre-installation for Truck Data Center 8	Z5S	Power take-off, pump, under top edge of frame
J9D	Provision for fitting toll tracking	Z5V	Starter with M10, HDEP
K0T	Main tank, left	Z5X	Left-hand drive
K1Y	Tank 330 l, left, 735 x 565 x 950 mm, aluminium	Z5Y	Vehicle, for right-side traffic
K3T	AdBlue tank, 25 l	Z8E	Plausibility control code (internal)
K5M	Tanks, lockable	Z8M	CTT vehicle, conversion at Molsheim plant
K5Q	Fuel screen, tank filler neck	Z8P	CTT vehicle, conversion on assembly line
K5S	Protective cap for AdBlue metering system	Z8Q	CTT vehicle, conversion preparations on assy. line
K7R	Exhaust pipe, straight, above second axle	Z8T	Main contractor, company-owned branch
K8D	Exhaust sys., tailpipe to right/outwards, horizontal	Z8U	CTT vehicle

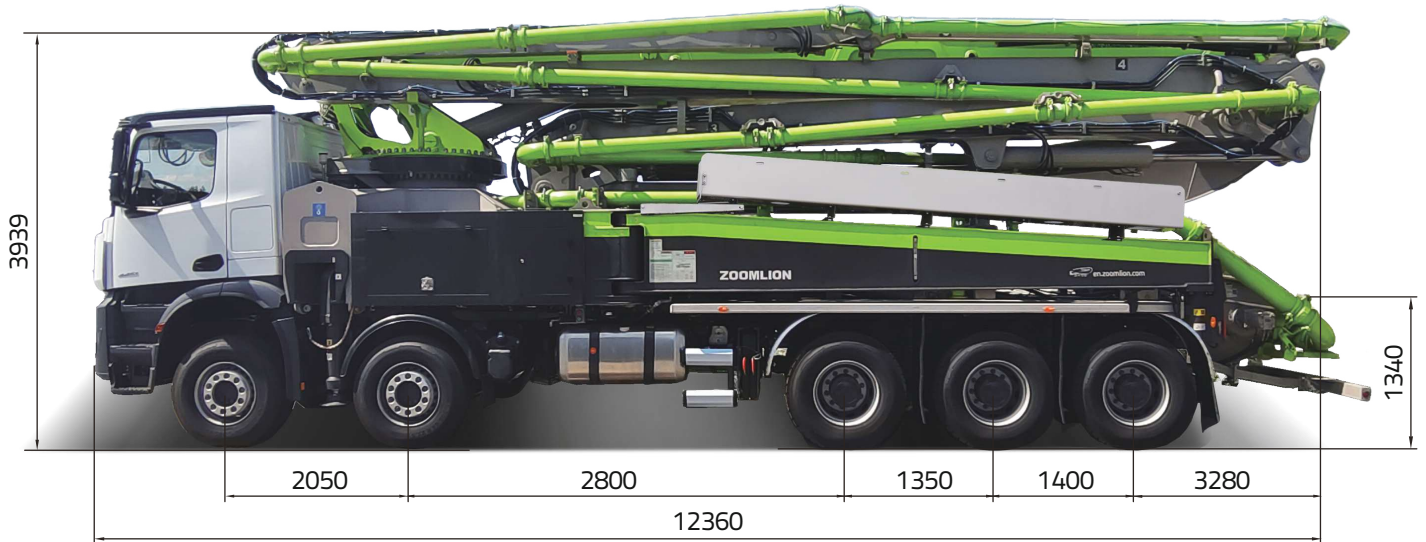
Orderdata (Order 1421701282)

L0A	Illumination regulation, in acc. with UN-R 48.06	Z9A	Constructability request order, special control
L1C	LED daytime running lamps		

SP-REQ. no.	Description
V/AHM04	Mercedes-Benz Molsheim
V/AJAAF	Offer: Distance between the center of the 2 front axles 2050 mm
W/JMLA	Air compressor for additional steering pump
W/JQYY	Vehicle operation without trailer
W/JQ3C	Rear spring, 2 x 15.0 t
1/AHM04-50	Mercedes-Benz Molsheim
1/AJCRA	Offer: Frame adaptation for installation of trailing axle
1/AJC0U	Offer: Frame overhang 1700 mm
1/AJKFH	Offer: Fuel pre-filter displaced, in accordance with drawing number X
1/AJKUV	Offer: AdBlue tank moved rearwards to measure 2750 mm
1/AJWDJ	Offer: Weight variant 47,0 t (8,0/8,0/13,0/13,0/9,0)
1/AJZNX	Offer: Modification in accordance with plan number "X"
1/AJZNXN0824	Offer: Modification in accordance with plan number "X"
1/A24217N128	
1/JAAR	Distance trailing axle to rear axle 1400mm
1/JALN	Load relief control for trailing axle with PTO engaged
1/JANL	Trailing axle, 9 t, steered, de-loadable Parabolic spring
1/JBWI	Air reservoir relocated between 1st and 2nd front axle, space for supports
1/JBWP	EAPU moved to frame
1/JBWZ	Adaptation arrangement for air tanks
1/JCFO	Battery carrier relocated to dimension 3775 mm
1/JCLM	CTT steering system, electro-hydraulic
1/JCMX	Shortening of frame overhang
1/JE4W	Starting-off aid, speed limit 30 km/h
1/JKXE	Exhaust system relocated to dimension 2750 mm
1/JK3V	AdBlue tank, 60 l, left
1/JZAB	Chassis conversion to 10x4/6 single tyres trailing axle
1/JZFC	Vehicle preparation, Concrete pump
1/JZYN	Control code, no CoC, national individual registration needed
1/JZYU	Control code, system approvals list not complete

ZOOMLION

TRUCK MOUNTED CONCRETE PUMP 50X-6RZ



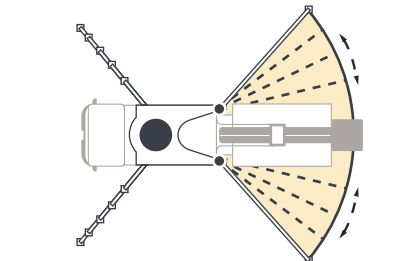
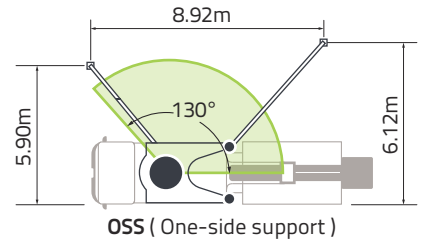
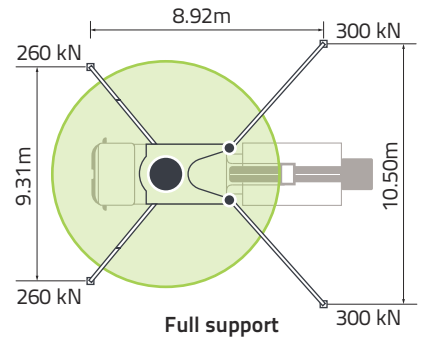
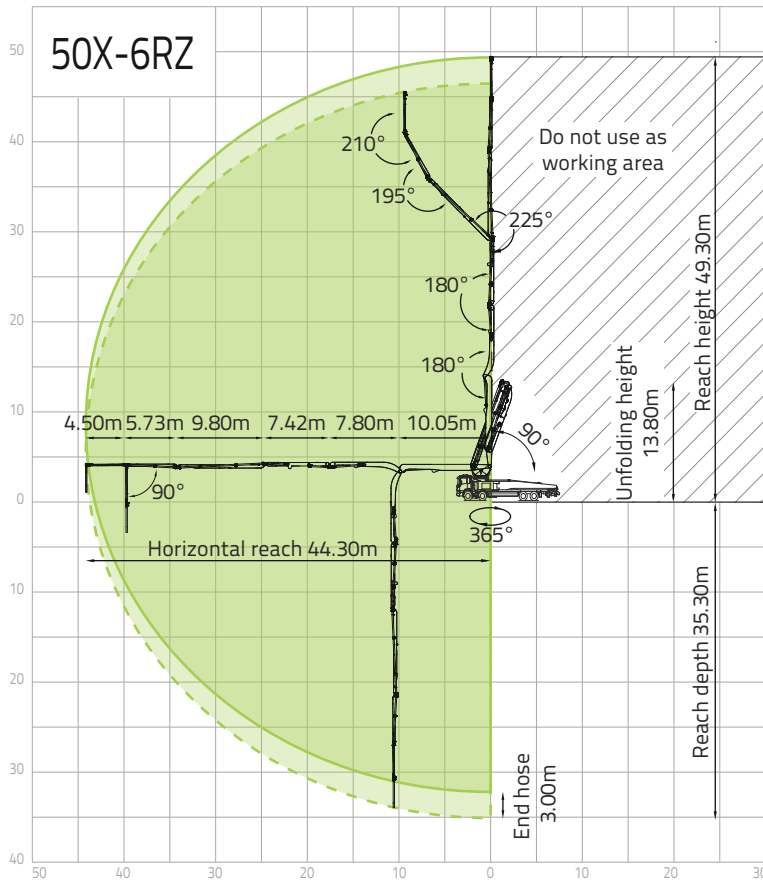
Note: Standard version. Dimensions and weights depend on truck, pump model and equipment.
Dimensions in mm. Example based on Mercedes-Benz Arocs 5 4751.
For illustration only. Actual products may vary.

Technical Specifications

BOOM	UNIT	
Reach height	m	49.30
Horizontal reach (gross/net)	m	44.30 / 39.62
Reach depth	m	35.30
Unfolding height	m	13.80
Sections	/	6
Folding system	/	RZ
End hose length	m	3
Delivery line	mm	DN 125
PUMP		
Max. output	m ³ /h	170
Max. pressure	bar	85
Delivery cylinder	mm	Φ 260
Stroke	mm	2100

*All data are maximum theoretical values.

Reach information diagram, support



Configurations (Optional★)

Pumping System

- CPC (Condition-adaptive Pumping Control)
- ECO (Eco. Pumping)
- Pumping concrete status identification and prompt★
- MPC (Multi-mode Pumping Control)★

Hopper

- Streamline hopper
- Compressed air for oil sprayer
- Aluminium alloy hopper cover
- Bar-type grille
- Hopper vibrator
- Cleaning ball stopper
- Chrome-plated concrete cylinder
- Wear-resistant S pipe
- Carbide wear plate
- Labour-saving device for hopper cover
- Quick-release concrete piston
- Automatic forward/reverse agitator rotation
- S-valve swinging speed control

Cleaning

- Water tank, 700L
- Water pump, 70L/min, 15bar
- Water pump, 15L/min, 200bar
- Hose reel for high pressure water pump, 20m
- Quick-connect water inlet

Support

- SSM (Standard Support Mode) (Full Support/OSS/FS/LF/RF)
- iSM basic (intelligent Support Mode basic)

Placing Boom

- OBF (One-joystick Boom Fold/Unfold)
- OBP (One-joystick Boom Place)
- ABC (Active Boom Control)
- ARC (Active Boom Rotation Control)
- iMMC (intelligent Multi-arm Motion Control)

Delivery Line

- Self-locking end hose clamp
- Snap pipe coupling
- End hose, 3m, DN 125
- Double-layer pipes

Lighting

- Boom tip light, LED
- Boom light, LED
- Hopper light, LED
- Rear hopper light, LED
- Baseframe access light, LED
- Support area spotlight, LED
- Support indicator light, LED
- Tipping warning light, LED
- Pumping warning light, LED

Stop light, LED

- Height-marker lamp, LED
- Side-marker lamp, LED

Safety

- Reversing camera system
- 360° surround camera system
- OGS (Outriggers Guidance System)
- EPC (Emergency Pumping Control)
- Emergency hydraulic power interface for boom and outrigger
- End hose squeeze valve, operable by remote control
- Step handrail
- Platform handrail

Digital Management

- ZOOMLINK APP

Operation and Maintenance

- Hose rack on outrigger
- Diesel tank in rear outrigger
- Two separate hydraulic oil tanks
- Built-in filter element
- Central grease lubrication system
- Mushroom button for horn
- Dual radio remote controls
- Remote engine off
- OTA (Over-the-Air Update)
- Self-diagnosis and monitoring

ZOOMLION Heavy Industry Science & Technology Co.,Ltd.

Add: No.677, Lugu Road, Zoomlion Industry Park, Changsha, Hunan, China, 410205

Copyright © ZOOMLION 2024. All rights reserved. No part of the materials provided may be reproduced or copied in any form, or used for any purpose without prior permission from ZOOMLION.

en.zoomlion.com

